



# Minerals Need Assessment 2019

Annex



**Herefordshire Minerals and Waste Local Plan**

**Annex**

**Annex A** Figure 2.1 Identified Mineral Sites, Herefordshire, 2018

**Annex B** Consumption of total sand and gravel (land-won and marine-dredged) for aggregate use in 2014 identifying for each sub-region the principal supplying Mineral Planning Authorities, BGS, 2014

**Annex C** Consumption of crushed rock for aggregate use in 2014 identifying for each sub-region the principal supplying Mineral Planning Authorities, BGS, 2014

The contents of this document are all designed to be printed at A3.



## Annex A

Figure 2.1 Identified Mineral Sites, Herefordshire, 2018

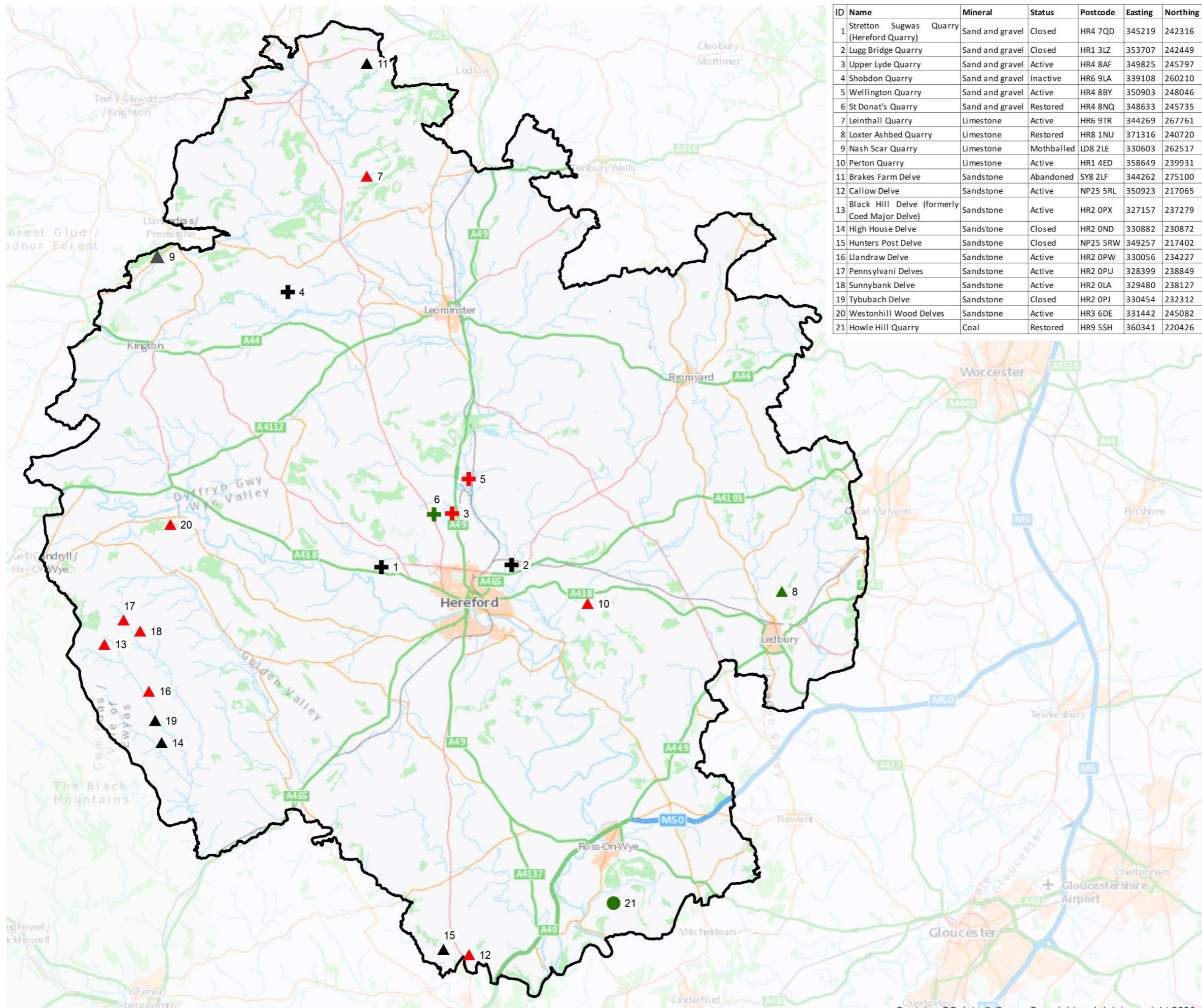


### Herefordshire Minerals and Waste Local Plan

# Herefordshire Minerals and Waste Local Plan

**Figure 2.1**  
Identified mineral sites,  
Herefordshire, 2018

ID	Name	Mineral	Status	Postcode	Easting	Northing
1	Stretton Sugwas (Hereford Quarry) Quarry	Sand and gravel	Closed	HR4 7QD	345219	242316
2	Lugg Bridge Quarry	Sand and gravel	Closed	HR1 3LZ	353707	242449
3	Upper Lyde Quarry	Sand and gravel	Active	HR4 8AF	349825	245797
4	Shobdon Quarry	Sand and gravel	Inactive	HR6 9LA	339108	260210
5	Wellington Quarry	Sand and gravel	Active	HR4 8BY	350903	248046
6	St Donat's Quarry	Sand and gravel	Restored	HR4 8NQ	348633	245735
7	Leinthall Quarry	Limestone	Active	HR6 9TR	344269	267761
8	Loxter Ashbed Quarry	Limestone	Restored	HR8 1NU	371316	240720
9	Nash Scar Quarry	Limestone	Mothballed	LD8 2LE	330603	262517
10	Perton Quarry	Limestone	Active	HR1 4ED	358649	239931
11	Brakes Farm Delve	Sandstone	Abandoned	SY8 2LF	344262	275100
12	Callow Delve	Sandstone	Active	NP25 5RL	350923	217065
13	Black Hill Delve (formerly Coed Major Delve)	Sandstone	Active	HR2 0PX	327157	237279
14	High House Delve	Sandstone	Closed	HR2 0ND	330882	230872
15	Hunters Post Delve	Sandstone	Closed	NP25 5RW	349257	217402
16	Llandraw Delve	Sandstone	Active	HR2 0PW	330056	234227
17	Pennsylvania Delves	Sandstone	Active	HR2 0PU	328399	238849
18	Sunnybank Delve	Sandstone	Active	HR2 0LA	329480	238127
19	Tybubach Delve	Sandstone	Closed	HR2 0PJ	330454	232312
20	Westonhill Wood Delves	Sandstone	Active	HR3 6DE	331442	245082
21	Howle Hill Quarry	Coal	Restored	HR9 5SH	360341	220426



## Legend

### Minerals Facilities

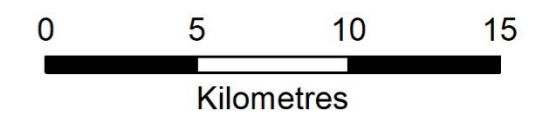
#### Type

- Coal
- ▲ Limestone
- + Sand and gravel
- ▲ Sandstone

#### Status

- Active
- Restored
- Uncertain
- Inactive/Closed

Herefordshire County Boundary



SCALE  
1:250,000 @ A3

DATE  
05/01/2021



## Annex B

Consumption of total sand and gravel (land-won and marine-dredged) for aggregate use in 2014 identifying for each sub-region the principal supplying Mineral Planning Authorities, BGS, 2014



### Herefordshire Minerals and Waste Local Plan

Consumption of total sand and gravel (land-won and marine-dredged) for aggregate use in 2014 identifying for each sub-region the principal supplying Mineral Planning Authorities

Source AWP	Source MPA	Destination sub-region																													
		EEN1	EEN2	EEN3	EEN4	EEN5	EEN6	EEN7	EMD1	EMD2	EMD3	EMD4	EMD5	EMD6	LON1	LON2	LON3	NEA1	NEA2	NEA3	NEA4	NEA5	NWE1	NWE2	NWE3	NWE4	NWE5	RP1	SCT1		
South West	Bristol City Council																														
	Devon County Council					<1%																									
	Dorset County Council								<1%																						
	Gloucestershire County Council																														
	Somerset County Council																														
South East	Wiltshire Council		<1%	<1%	<1%																										
	Buckinghamshire County Council																														
	East Sussex County Council																														
	Hampshire County Council					<1%																									
	Isle of Wight Council																														
	Kent County Council		<1%	1-10%	<1%																										
	Medway Council																														
	Milton Keynes Council	<1%																													
	Oxfordshire County Council	<1%				<1%																									
	South Downs National Park																														
	Surrey County Council																														
	West Berkshire District Council (Newbury District Council)																														
	West Sussex County Council																														
	Windsor & Maidenhead District Council																														
	Wokingham District Council																														
Greater London	Greater London - East	1-10%		20-30%	1-10%		<1%								60-70%	50-60%	70-80%														
	Greater London - West															1-10%															
East of England	Bedford Borough Council	1-10%	1-10%		1-10%																										
	Cambridgeshire County Council	10-20%	40-50%	<1%	1-10%	1-10%	1-10%		1-10%	<1%	1-10%	10-20%	<1%																		
	Central Bedfordshire Council	50-60%	1-10%	<1%	1-10%	<1%	<1%																								
	Essex County Council	1-10%	1-10%	60-70%	10-20%	1-10%	10-20%																								
	Hertfordshire County Council	1-10%	<1%	<1%	60-70%			70-80%	<1%		<1%	<1%																			
	Norfolk County Council	1-10%	30-40%	<1%		80-90%	10-20%	20-30%	<1%		<1%	<1%	<1%																		
	Peterborough	1-10%	30-40%	<1%		<1%	<1%																								
	Suffolk County Council	1-10%	1-10%	<1%	1-10%	1-10%	50-60%																								
	Thurrock Borough Council			1-10%												1-10%	<1%														
	East Midlands	Derbyshire County Council														40-50%	1-10%	<1%	1-10%		<1%	20-30%									
Leicestershire County Council		1-10%		<1%	<1%		<1%								1-10%	50-60%	<1%	10-20%	1-10%	10-20%											
Lincolnshire County Council			1-10%			<1%	1-10%	<1%	1-10%	1-10%	80-90%	10-20%	30-40%	40-50%																	
Northamptonshire County Council		<1%	1-10%		<1%																										
Nottinghamshire County Council				<1%																											
West Midlands	Herefordshire Council																														
	Shropshire Council																														
	Solihull Metropolitan Borough Council																														
	Staffordshire County Council	<1%	1-10%	<1%	<1%	<1%																									
	Warwickshire County Council																														
	Worcestershire County Council																														
North West	Cheshire East Council																														
	Cheshire West & Chester Council																														
	Cumbria County Council																														
	Lancashire County Council																														
	Liverpool City Council																														
	Salford City Council																														
	Wigan Metropolitan Borough Council																														
Yorkshire & the Humber	Doncaster Metropolitan Borough Council																														
	East Riding of Yorkshire Council																														
	Kirklees Metropolitan Borough Council																														
	North Lincolnshire Council																														
North East	North Yorkshire County Council																														
	City of Sunderland Council																														
	Durham County Council																														
	Middlesbrough Borough Council																														
	Northumberland County Council																														
South Wales	South Tyneside Metropolitan Borough Council																														
	Cardiff County Council																														
	Carmarthenshire																														
	Ceredigion																														
	Monmouthshire																														
	Newport																														
North Wales	Pembrokeshire																														
	Pembrokeshire Coast National Park																														
	Swansea (City of)																														
Total consumption (thousand tonnes)		1 299	2 063	4 329	1 146	1 341	915	184	625	1 410	989	1 108	1 032	513	3 190	1 904	589	428	109	370	429	289	448	521	280	419	420	1	83		

1) This table categorises for each destination sub-region the percentage of its total consumption received from source MPAs.  
2) It is designed to be read down each column (e.g. between 50-60% of total sand and gravel [land-won and marine-dredged combined] consumed in the EEN1 sub-region was supplied from Central Bedfordshire).  
3) The table is formatted to print at A3 page size.









## Annex C

Consumption of crushed rock for aggregate use in 2014 identifying for each sub-region the principal supplying Mineral Planning Authorities, BGS, 2014



### Herefordshire Minerals and Waste Local Plan

Consumption of crushed rock for aggregate use in 2014 identifying for each sub-region the principal supplying Mineral Planning Authorities

Source AWP	Source MPA	Destination sub-region																										
		NWE5	RPI1	SCT1	SEA1	SEA2	SEA3	SEA4	SEA5	SEA6	SEA7	SEA8	SEA9	SWE1	SWE2	SWE3	SWE4	SWE5	SWE6	SWE7	SWE8	UNK1	WLS1	WLS2	WLS3	WLS4	WLS5	WLS6
South West	Outside England and Wales				1-10%	<1%	20-30%	<1%	40-50%		10-20%	10-20%	90-100%		<1%	90-100%	1-10%	<1%	<1%	<1%	1-10%					<1%		<1%
	Cornwall Council				<1%		1-10%	<1%				1-10%		<1%	90-100%	1-10%	<1%	<1%	<1%	<1%	1-10%					<1%		<1%
	Dartmoor National Park															20-30%												
	Devon County Council				<1%			<1%			<1%	<1%	1-10%		1-10%	40-50%	<1%		1-10%	<1%	<1%							
	Dorset County Council							<1%				<1%	1-10%		1-10%	40-50%	<1%		1-10%	<1%	<1%							
	Gloucestershire County Council				<1%	<1%		<1%	<1%	1-10%	<1%	<1%	1-10%		<1%	<1%	40-50%	<1%	<1%	<1%		<1%	1-10%			1-10%	<1%	<1%
	North Somerset Council				1-10%	1-10%	<1%	<1%		<1%	1-10%	<1%		70-80%		1-10%	1-10%	<1%	1-10%	1-10%		1-10%						
	Plymouth City Council					1-10%		1-10%							1-10%	10-20%				<1%								
South East	Somerset County Council				70-80%	<1%	20-30%	60-70%	10-20%	30-40%	60-70%	70-80%	<1%	10-20%	<1%	1-10%	50-60%	<1%	90-100%	60-70%	50-60%	10-20%				<1%		<1%
	South Gloucestershire Council				1-10%	<1%		<1%	<1%	<1%	1-10%	<1%		1-10%		<1%	<1%	40-50%	<1%	10-20%	30-40%							<1%
	Wiltshire Council																	<1%		1-10%								
	Isle of Wight Council							1-10%																				
	Kent County Council								30-40%		30-40%																	
	Oxfordshire County Council				<1%	40-50%		<1%			40-50%	<1%		1-10%				<1%			<1%		<1%					
	Surrey County Council																											
	Cambridgeshire County Council				<1%	1-10%				<1%	<1%	<1%	<1%															
East Midlands	Norfolk County Council																											
	Peterborough																											
	Derbyshire County Council	10-20%				<1%												<1%				70-80%	<1%					
	Leicestershire County Council			1-10%	1-10%	40-50%	<1%	10-20%	1-10%	10-20%	1-10%	1-10%	<1%	<1%	<1%	<1%	<1%	<1%	<1%	10-20%				<1%	1-10%	<1%	1-10%	<1%
	Lincolnshire County Council																											
	Northamptonshire County Council																											
	Peak District National Park	1-10%	90-100%		<1%			<1%							<1%									<1%				
	Rutland CC DC																											
West Midlands	Herefordshire Council																					1-10%				1-10%		<1%
	Shropshire Council			<1%	1-10%	1-10%	<1%	<1%		<1%	<1%	<1%						<1%	<1%				<1%	<1%	1-10%		<1%	<1%
	Staffordshire County Council																											
	Warwickshire County Council																											
	Bury Metropolitan Borough Council																											
	Cheshire East Council	<1%																										
	Cumbria County Council	10-20%		20-30%																								
	Lancashire County Council																											
Yorkshire & the Humber	St. Helens Metropolitan Borough Council	1-10%																										
	Warrington Borough Council	1-10%																										
	Bradford Metropolitan Borough Council																											
	Calderdale Metropolitan Borough Council																											
	Doncaster Metropolitan Borough Council																											
	East Riding of Yorkshire Council																											
	Kirklees Metropolitan Borough Council																											
	Leeds City Council																											
North East	North Lincolnshire Council																											
	North Yorkshire County Council																											
	Wakefield Metropolitan Borough Council																											
	Yorkshire Dales National Park			40-50%	<1%			<1%	<1%					<1%		<1%							<1%			<1%		
	City of Sunderland Council																											
	Durham County Council																											
	Hartlepool Borough Council																											
	Northumberland County Council			10-20%																								
South Wales	Northumberland National Park			<1%				<1%				<1%		<1%					<1%								<1%	
	South Tyneside Metropolitan Borough Council																											
	Blaenau Gwent																											1-10%
	Brecon Beacons National Park																									20-30%	1-10%	1-10%
	Bridgend																									10-20%	<1%	<1%
	Caerphilly																									<1%		
	Cardiff County Council																								10-20%	1-10%	20-30%	
	Carmarthenshire																									10-20%	30-40%	<1%
North Wales	Ceredigion																									1-10%	<1%	<1%
	Neath Port Talbot				<1%				<1%		<1%			1-10%		<1%		1-10%				<1%			1-10%	1-10%	1-10%	
	Pembrokeshire																									1-10%	1-10%	1-10%
	Pembrokeshire Coast National Park																									1-10%	1-10%	1-10%
	Powys			1-10%	1-10%		1-10%	1-10%	1-10%	<1%	<1%	<1%		1-10%		<1%	1-10%	<1%	1-10%	1-10%		1-10%	1-10%		1-10%	40-50%	1-10%	
	Rhondda, Cynon, Taf (Taff)				1-10%																					20-30%	<1%	<1%
	Vale of Glamorgan																									1-10%	1-10%	1-10%
	Conwy (Aberconwy & Colwyn)						1-10%	1-10%	<1%																			
Total consumption (thousand tonnes)	Flintshire	10-20%																							10-20%	40-50%	70-80%	<1%
	Gwynedd																								1-10%	30-40%	<1%	<1%
	Isle of Anglesey	1-10%																							<1%	20-30%	10-20%	<1%
		2 907	0	16	1 161	486	280	912	1 748	1 447	304	761	28	1 308	884	3 058	432	2 648	4 801	1 140	896	1 595	1 323	554	106	2 453	1 530	1 910

Consumption of crushed rock for aggregate use in 2014 identifying for each sub-region the principal supplying Mineral Planning Authorities

Source AWP	Source MPA	Destination sub-region											
		Herefordshire	Shropshire and Telford and Wrekin	Staffordshire	Warwickshire	Worcestershire	Remainder of West Midlands	Unknown but somewhere in the West Midlands	Humber (East Riding, North Lincolnshire and North East Lincolnshire)	North Yorks, Yorkshire Dales and North York Moors National Parks	South Yorkshire	West Yorkshire	Unknown but somewhere in Yorks & the Humber
		WMD1	WMD2	WMD3	WMD4	WMD5	WMD6	WMD7	YHU1	YHU2	YHU3	YHU4	YHU5
	Outside England and Wales								30-40%				
South West	Cornwall Council						<1%			<1%			
	Dartmoor National Park												
	Devon County Council												
	Dorset County Council												
	Gloucestershire County Council	1-10%	<1%	<1%	1-10%	10-20%	<1%						
	North Somerset Council												
	Plymouth City Council												
	Somerset County Council	10-20%		1-10%	<1%			10-20%				<1%	
South East	Isle of Wight Council												
	Kent County Council												
East of England	Oxfordshire County Council				1-10%								
	Surrey County Council												
East Midlands	Cambridgeshire County Council	<1%											
	Norfolk County Council												
	Peterborough												
	Derbyshire County Council		<1%	20-30%	<1%		1-10%		1-10%	<1%	10-20%	1-10%	
	Leicestershire County Council	1-10%	1-10%	10-20%	60-70%	1-10%	60-70%	50-60%	<1%	<1%	20-30%	<1%	<1%
	Lincolnshire County Council			<1%				1-10%					
	Northamptonshire County Council												
	Peak District National Park		<1%	20-30%	<1%	<1%	1-10%		<1%	<1%	<1%	<1%	
West Midlands	Rutland CC DC												
	Herefordshire Council	20-30%	1-10%	<1%	<1%	10-20%	1-10%						
	Shropshire Council	1-10%	60-70%	20-30%	1-10%	40-50%	20-30%	30-40%	<1%	<1%	1-10%	<1%	
	Staffordshire County Council			1-10%									
North West	Warwickshire County Council		<1%	1-10%	20-30%	<1%	1-10%				<1%		
	Bury Metropolitan Borough Council												
	Cheshire East Council												
	Cumbria County Council			<1%			<1%		<1%	1-10%	<1%	<1%	
	Lancashire County Council									<1%		<1%	
Yorkshire & the Humber	St. Helens Metropolitan Borough Council												
	Warrington Borough Council												
	Bradford Metropolitan Borough Council											<1%	
	Calderdale Metropolitan Borough Council											1-10%	
	Doncaster Metropolitan Borough Council			<1%	<1%		<1%		1-10%	1-10%	50-60%	20-30%	10-20%
	East Riding of Yorkshire Council								1-10%				
	Kirklees Metropolitan Borough Council											1-10%	
	Leeds City Council								<1%	<1%		10-20%	1-10%
	North Lincolnshire Council												
	North Yorkshire County Council								10-20%	60-70%	1-10%	10-20%	80-90%
North East	Wakefield Metropolitan Borough Council											<1%	
	Yorkshire Dales National Park		<1%	<1%			1-10%		30-40%	10-20%	<1%	30-40%	
	City of Sunderland Council												
	Durham County Council								<1%	10-20%	<1%	1-10%	
	Hartlepool Borough Council									<1%			
	Northumberland County Council								<1%	<1%			
South Wales	Northumberland National Park		<1%	<1%	<1%	<1%			<1%	<1%	<1%	<1%	
	South Tyneside Metropolitan Borough Council												
	Blaenau Gwent												
	Brecon Beacons National Park		<1%			<1%				<1%			
	Bridgend												
	Caerphilly		<1%										
	Cardiff County Council												
	Carmarthenshire												
	Ceredigion												
	Neath Port Talbot		<1%										
	Pembrokeshire												
	Pembrokeshire Coast National Park												
North Wales	Powys	40-50%	20-30%	1-10%	<1%	20-30%	<1%		<1%	<1%	<1%	<1%	
	Rhondda, Cynon, Taf (Taff)		<1%							<1%		<1%	
	Vale of Glamorgan												
	Conwy (Aberconwy & Colwyn)		<1%	<1%									
	Flintshire		1-10%	<1%									
	Gwynedd												
Isle of Anglesey													
<b>Total consumption (thousand tonnes)</b>		<b>700</b>	<b>2 025</b>	<b>1 040</b>	<b>865</b>	<b>540</b>	<b>1 053</b>	<b>66</b>	<b>724</b>	<b>2 801</b>	<b>2 124</b>	<b>2 536</b>	<b>822</b>